

CROSS FLOW FAN DC

LWLB-DC065 Double & Triple Fan

Motor Type : DC Brushless External Rotor Motor

Housing Material : Galvanized Sheet Steel

Blade Material : Aluminum Alloy

Insulation Class : B/F/H

Bearing Type: Ball bearing / Sleeve Bearing

Speed Control : 0~10V / PWM control

Operation Temperature : - 25 °C ~ +60 °C

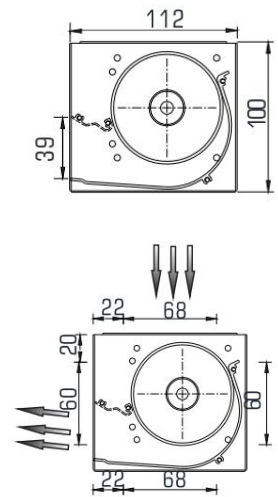
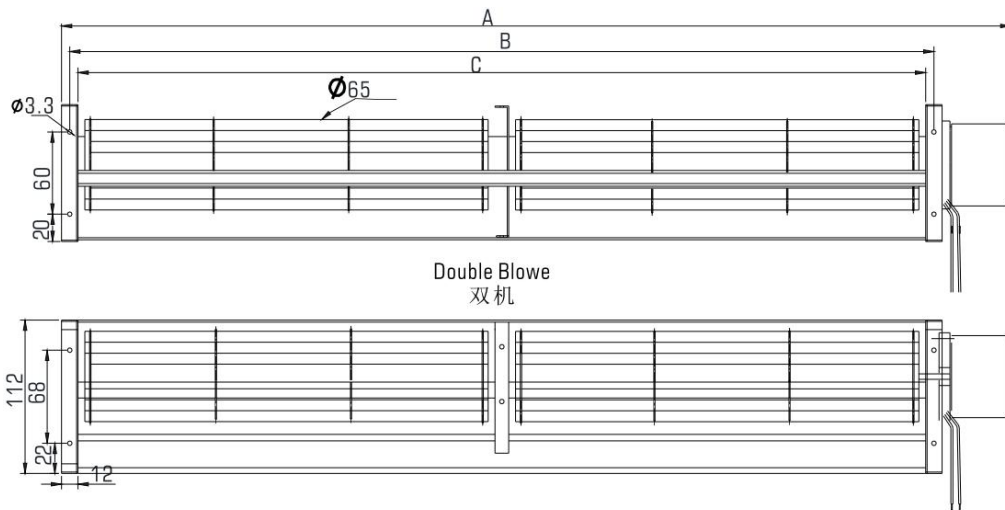
TELL : 0086 574 6218 9863

FAX : 0086 574 6218 9863

Email : sales@zjlongwell.com Website : www.zjlongwell.com



■ Technical Specification



Model	Dimension(mm)			Voltage V	Current A	Speed rpm	Pressure mmH2O/Pa	Airflow m³/h	Noise dB(A)	Blower
	A	B	C							
LWCD-65520M-10	589	532	520	24	1.2	1800	64	705	50	single
LWCD-65520L-10				12	2.7	1800				
LWCD-65620M-10	689	632	620	24	1.25	1800	64	825	51	single
LWCD-65620L-10				12	2.5	1800				
LWCD-65720M-20	789	732	720	24	1.30	1800	64	860	50	double
LWCD-65720L-20				12	2.6	1800				
LWCD-65750M-20	819	762	750	24	1.4	1800	64	880	50	double
LWCD-65750L-20				12	2.8	1800				
LWCD-65820M-20	889	832	820	24	1.8	1800	65	920	53	double
LWCD-65820L-20				12	3	1800				
LWCD-65870M-20	939	882	870	24	1.6	1800	65	970	53	double
LWCD-65870L-20				12	3.2	1800				
LWCD-651100M-30	1174	1117	1105	24	4.2	1600	55	1225	56	triple
LWCD-651300M-30	1374	1317	1305	24	4.2	1600	55	1445	56	triple